



DPS-FORD MANUAL

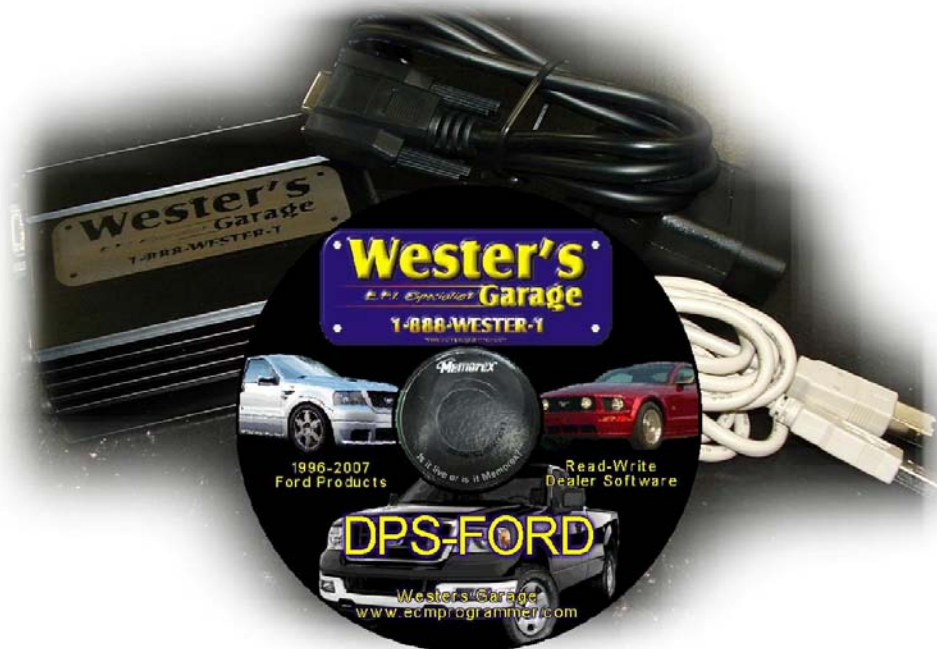


TABLE OF CONTENTS

Table of Contents.....	1
Installing WESTER'S MultiLoader Software onto PC.....	2
First Time Using the Interface Box.....	2
Understanding the L.E.D. Positions	3
Interface Buttons Description.....	4
Retrieving & Backing Up Your Vehicle's Stock File.....	4
Retrieving Your Stock File with the Interface Box	5
Saving Your Stock File to Your PC	5
Installing the Performance File to Your MultiLoader	6
Programming the Performance File to Your Vehicle	6
Returning the Vehicle Back to Stock that was Just Performance Programmed.....	7
Returning an Earlier Tuned Vehicle Back to Stock	7
MultiLoader Error Codes.....	8
Trouble Shooting.....	8
MultiLoader Definitions	9
Notes Page	10

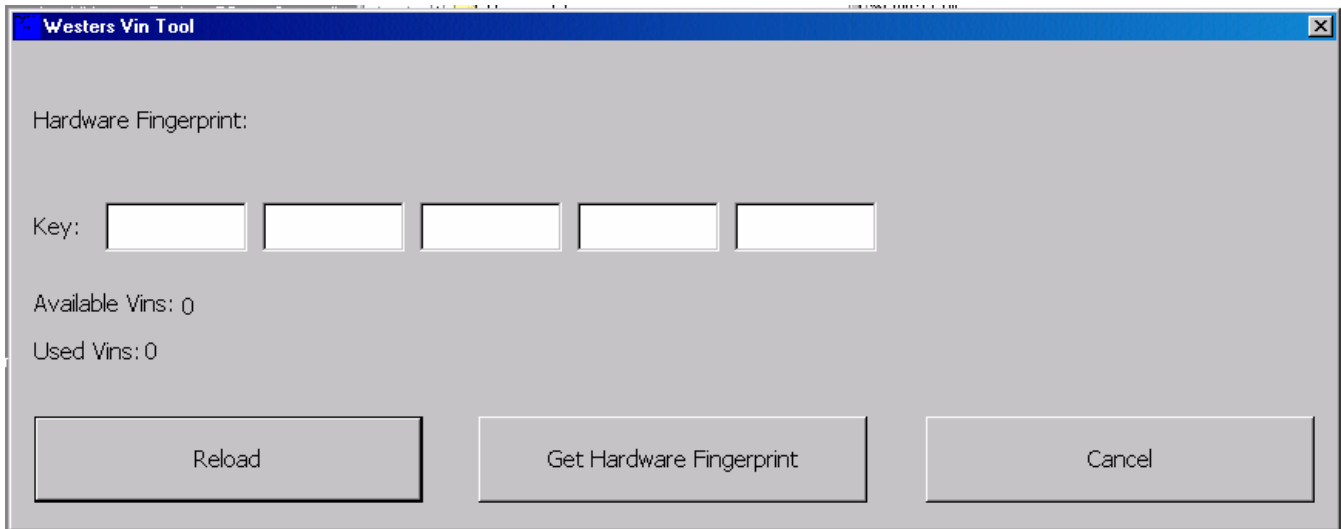
INSTALLING WESTERS MULTILoader SOFTWARE ONTO PC

1. Turn your laptop or PCM on. You must make sure the laptop or PC time & date is accurate.
2. Insert CD and the program will automatically start to install. You will be prompted to click NEXT. Click next until you get a message that says installation is complete. Click FINISH and when it is done, click OK.
 - a. If the software fails to start, there are two programs on the CD – WINRAR is an extraction program that must be installed / run first.
3. Double click on your MultiLoader icon which is located on your desktop. You will need to type the registration name and security key at this time. Please type is as it is printed in this manual as the Name and Key are case sensitive.
4. Name: **Westers Customer**
Key: **5D26-550D-F30F-5D93**

FIRST TIME USING THE INTERFACE BOX

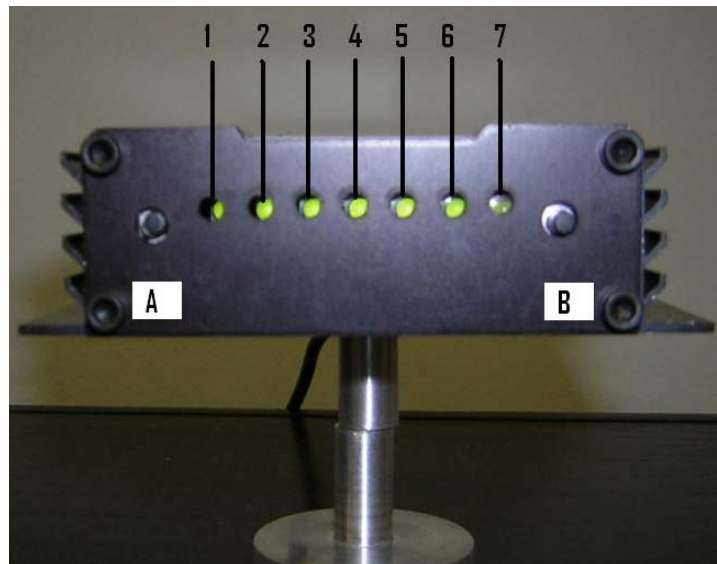
You've already installed the software

1. Once you plug the USB cable to the Interface box and your PC, after a few seconds you will get a window that opens and says "Found New Hardware" and an installation wizard window will pop open.
2. Pm the wizard window you need to select "Search by Specific Location" (Do not click "Search Automatically"). Then click "Next."
3. On this window you need to select: "Include this location in your search." Uncheck all other options.
4. Click the "Browse" button. Navigate to the "Drivers" folder located at: C:\Program Files\westers garage\drivers\ -- Click OK and then click "Next." This operation may need to be performed more than once as Windows often will not mind the driver folder or drivers.
5. You should get a message that says "New drivers installed and ready to use."
6. Double click the MultiLoader icon on your desktop. Your MultiLoader may come pre-loaded with the number of VIN's available to reprogram. Default number of VIN's is 10, although different dealers purchase more VIN's initially. To order more VIN's, open the "Westers VIN Tool" (C:\Program Files\westers garage) with your MultiLoader already connected to your computer.
7. Get the "Hardware Fingerprint" and email us (nwester@eidnet.org) the KEY. DO NOT CLOSE THIS SOFTWARE WINDOW YET. If you close it, we'll have to get to resubmit another key.
8. We will email you a RELOAD key. It must be copied or typed in the 5 windows. Hit the "RELOAD" button. The pre-purchased VIN count will be modified and indicate the number of vehicles you are prepaid.



UNDERSTANDING THE L.E.D. POSITIONS

The LED's are designed to inform you of what's happening with the Interface box. This feedback will inform you of what the Interface box is currently in the process of doing, what the Interface box wants you to do, or any error codes that have been set. To help clarify this, there are 7 LED's on the Interface box.



LED ① to ⑥ represents a file position. The Stock file is always loaded to position ⑥ and is read out from position ⑥ with the MultiLoader Software.

Performance files can only be loaded into positions ① through ⑤.

- Individual ①, ②, ③, ④, ⑤, or ⑥ is lit up solid, the Interface box is ready to “flash” that position into the vehicle.
- Only ③ & ④ are flashing at the same time, this is the “Turn Key On” instruction to prepare for Reading or Reflashing.

- Only ⑤, ⑥, & ⑦ are solid, the Interface box is ready to “read” the vehicle stock file.

LED ⑦ is the indicator letting you know when a “Read” or “Flash” is in progress or has been completed.

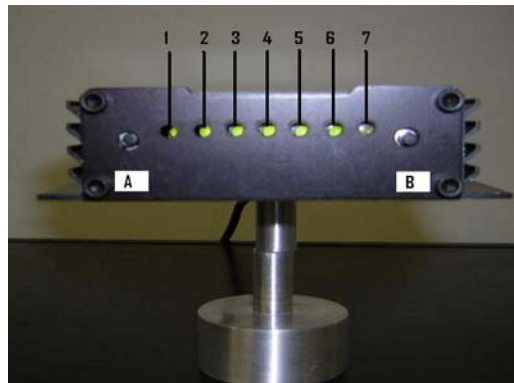
- If ⑦ is GREEN, box is ready for a command.
- If ⑦ is RED and connected to the vehicle, the box is performing a task so do not disturb!!
- ① to ⑥ are scrolling across the Interface box and ⑦ is lit up RED, the Interface is in the process of “Reading” or “Flashing” the vehicle (Do not turn off the ignition key or disconnect the OBD2 cable).
- ① to ⑥ flash ON & OFF at the same time ⑦ is lit up GREEN, the Interface has completed its “Reading” or “Flashing” and it is now safe to turn off the ignition key and unplug the OBD2 cable from the vehicle.
- ① & ② flash back and forth, an error code has been set. Count the number of flashes of ① and then ② so this will represent a code for example, 62 but you can check for “Interface Error Codes” in these instructions.

INTERFACE BUTTONS DESCRIPTION

There are two buttons located at either end of the Interface.

Button A (LEFT) is positioned towards the left side of the box and is described as the left button. This button will activate or execute the “Read” or “Flash” of the selected “B” position.

Button B (RIGHT) is positioned towards the right side of the box and is described as the right button. This button allows you to navigate through the different positions.



RETRIEVING & BACKING UP YOUR VEHICLE'S STOCK FILE




Make sure that your vehicle's computer is in its original condition and has the factory calibration installed. If you have any other performance computer modifications or programs installed (chip or programmer), you risk the chance of harming your vehicle's engine. You must make sure your vehicle has its original factory calibration installed and that there are not any pending trouble codes (they must be cleared). Wester's Garage will not be responsible for damage to your vehicle as a result.

RETRIEVING YOUR STOCK FILE WITH THE INTERFACE BOX

1. Make sure the ignition key is inserted in the ignition, but **DO NOT TURN IGNITION ON**.
2. **Plug OBD cable into the vehicle's OBD port** (located under the dash). **All LED's should be lit up** on the Wester's MultiLoader.
3. **Press the Right button (B) once**. Only ⑤, ⑥, & ⑦ should be lit up. If not, keep pressing the Right button (B). **Press the Left button (A) to execute reading of the ECM**.
4. ③ & ④ will start to flash on and off together on the Interface box. When they do, **immediately turn the ignition key to the ON position**. DO NOT start the vehicle!
5. Once you turn the key to the ON position, LED's will start to move in a single file (① to ⑥) across the box and ⑦ will turn **RED**. This may take up to 3 minutes, so be patient.
6. **Once the read is complete, ① through ⑥ will all flash simultaneously and ⑦ will be GREEN. The read is complete. You may turn the key off and unplug the Interface box. The stock file has been saved to position "6" in the MultiLoader.**

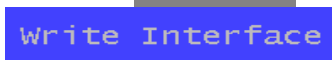
** Stock files will always be saved to Position 6 of the Interface box **

SAVING YOUR STOCK FILE TO YOUR PC

1. Plug the USB cable into the Interface box and your PC prior to starting up the MultiLoader software.
2. On your desktop screen, click on the start up your Multi-Loader Software.  MultiLoader icon. This should
3. Select "Position 6" on the File  Position drop down box.
4. Click "Read Interface". 
5. A window will pop open which will say "Save In: Customer Reads" at the top. On the bottom of the screen, you will be asked to name the file. It can be the customer's name or an invoice number (some type of distinction so you can "tie" the file to your customer). A folder will automatically be created and saved in the "Customer Reads" folder located at: C:/Program Files/westersgarage/Customer Reads.
6. Click on "Save". The status bar will move across the screen to show you the progress of the file transfer.
7. After transfer is complete make notice of the computer box code on the status line just above status bar. For example: **VXCF1.KYN1.pcm** (in this example box code is **KYN1**).

INSTALLING THE PERFORMANCE FILE TO YOUR MULTILoader

You must load the performance file into your MultiLoader Interface box (if it's not already pre-loaded).

1. Plug the USB cable into your MultiLoader Interface box and to your PC.
2. Double click on the Westers Flash Tool.exe desktop icon.
3. Select a File Position that you want to load (Default is Position 1).
your performance file to
4. Once the position is selected, click on  "Write Interface".
5. A window will pop open that says "Look in:" at the top. At this point you need to navigate to the folder you have the Performance file saved that we emailed you. Once you have the performance file (highlighted), click on "Open". The status bar at the bottom of the software window will start to move across the screen. Once it's completed, the MultiLoader software will update itself and show you that the Performance file has been successfully loaded into the File Position you chose.
6. Unplug the USB cable from the Interface box.

PROGRAMMING THE PERFORMANCE FILE TO YOUR VEHICLE

1. Go to your vehicle and plug the OBD-II cable to connector located under the dash.
2. All 7 LED's will light up.
 - If you installed the Performance file into Position 1, Press the Right button (B) two times.
 - **Only ① & ⑦** should be lit up **GREEN**.
 - If you installed the Performance file into any other position (② to ⑤), then you need to press the Right (B) button until that LED is lit up.
 - ⑦ will also be illuminated **GREEN** at this time.
 - Once the correct file position is selected (① through ⑤), press the Left (A) button.
 - ③ & ④ will start to flash together. **IMMEDIATELY turn the ignition key to the ON position – DO NOT START.**
 - The LED's will start to move across the box in a sequence from Position 6 to 1 indicating a download, and ⑦ will turn **RED** indicating a programming event. This will continue for up to 3 minutes—be patient. Once completed, **ALL ① to ⑥ will flash on & off at the same time and ⑦ will turn GREEN. TURN OFF THE KEY—WAIT 15 SECONDS.**
 - Install is complete. Unplug the OBD-II cable and start the vehicle. Road Test.

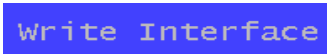
RETURNING THE VEHICLE BACK TO STOCK THAT WAS JUST PERFORMANCE PROGRAMMED

One Vehicle (Same vehicle you originally just read)

1. Plug the downloader into the OBD2 – DO NOT turn key on.
2. Press the Right (B) button **seven** times until ⑥ & ⑦ are lit up solid, the Interface box is now ready to “Reload” the vehicle’s stock file.
3. Now press the Left (A) button to flash the vehicle.
4. Wait for ③ & ④ to start flashing simultaneously and then turn key in to ON position. **DO NOT** start your vehicle.
5. Once the programming is complete, ① through ⑥ will start to flash simultaneously (same time) and ⑦ will be **GREEN**. The programming is complete. You may turn the key off and unplug the Interface box.

RETURNING AN EARLIER TUNED VEHICLE BACK TO STOCK

This vehicle was read and reprogrammed at an earlier date.

1. Connect your Interface box to your laptop/desktop PC via USB cable
2. Double click and open the MultiLoader icon.
3. Choose a file position (in the drop-down box) that you want the Stock file to go into. If only one vehicle has ever been read with the MultiLoader, then the Stock file will still be in Position 6, proceed to Step 7. If the MultiLoader has read multiple vehicles, you will need to load the Stock file back into the Interface box. Proceed to Step 4.
4. Click on “Write Interface”. 
5. A window will pop open that says “Open” in the top left corner. You need to navigate to the “Customer Reads” folder which is located at C:/Program Files/westers garage/customer reads. Select your stock file then Click “Open.”
6. The status bar will begin to move across the screen. It will prompt you when completed.
7. Disconnect USB cable and connect your OBDII cable to Interface box and your vehicle OBD2 connector.
8. Press Right (B) button until you select position where your stock file is stored.
9. Now press the Left (A) button to flash the vehicle.
10. Wait for ③ & ④ to start flashing simultaneously and then turn key in to ON position. **DO NOT** start your vehicle.
11. Once the programming is complete, ① through ⑥ will start to flash simultaneously (same time) and ⑦ will be **GREEN**. The programming is complete. You may turn the key off and unplug the Interface box.

MULTILOADER ERROR CODES

The Wester's Garage MultiLoader box is designed to produce error codes in case something goes wrong with the hardware or software. To determine what code is being set, ① & ② will start to flash. For example: ① will flash 5 times and then ② flashes 1 time, then you are getting error code 51. This sequence will keep repeating itself until you reset the Interface (unplug and plug the OBD cable).

Error Code	Possible Reason	Correction
12	Unable to ID PCM	Does the car start? If not, send ECM in.
51	Out of VIN Credits	Buy more VIN Credits nwester@eidnet.org
52	Already read this car	Return to stock to be able to read again
61	Not lock to car but trying to flash	Read stock file & save before trying to flash
62	Vehicle software revision doesn't match	Verify the file that was put in tool is correct
71	File type is not known for file transfer	Verify file going in is a correct MultiLoader file
73	Stock file hasn't been transferred to PC	Transfer the stock file ⑥ to PC

TROUBLE SHOOTING

MultiLoader Software

Problem 1: When plugged into the vehicle via OBD or plugged into my laptop PC, the LED's don't light up

Fix 1: Cycle the USB cable or cycle the OBD cable.

Fix 2: Need to check your cigarette lighter fuse. The OBD port runs on the same fuse.

Problem 2: When I open the MultiLoader software I get a message that says "Cannot Find Import". DLL may be missing, corrupt or wrong version file "FTD2XX.DLL". Error 126"

Fix 1: You will need to navigate to the "Drivers" folder which is located at: "C:\Program Files\westers garage\Drivers" Once there, you will see the missing file (FTD2XX.DLL). Right click on it and select COPY. Now click on the BACK button at the top of the screen. This will put you in the "westers garage" folder. Somewhere in that folder (in a blank location), Right click your mouse and select PASTE. Disconnect the USB cable from the Interface box and then reconnect it and try to open the MultiLoader software again.

Problem 3: When I try to open the MultiLoader software, I get a message that says “There was a problem reading the file names from the Interface”.

Fix 1: The Interface box is not connected to your PC via the USB cable.

Fix 2: You need to wait at least 4 seconds after connecting the USB cable to the Interface before trying to open the MultiLoader software.

MultiLoader Interface Box

Problem 1: When plugged into the vehicle via OBD or plugged into my laptop PC, the LED’s don’t light up.

Fix 1: Cycle the USB cable or cycle the OBD cable.

Fix 2: Need to check your cigarette lighter fuse. The OBD port runs on the same fuse.

MULTILOADER DEFINITIONS

Get Vehicle Info: While connected to the vehicle and laptop computer, clicking on this will display the Year, Model, Engine & Box code of the vehicle.

Read Vehicle: This button is only used if you’re using a laptop PC. While connected to a vehicle and a laptop, clicking on this will “read” the stock file from your vehicle.

Write Vehicle: This button is only used if you’re using a laptop PC. While connected to a vehicle and laptop, clicking on this will “write” a performance file or stock file to the vehicle’s computer. **NOTE:** You must have “write Interface” before doing this.

Write Interface: This allows you to load a performance file or stock file into the Interface box. This must be done prior to “writing” to a vehicle (via laptop or stand-alone).

Read Interface: This allows you to download the “stock” file from the Interface box and save it to your computer (“Customer Reads” folder).

Quit: This will shut the application down. You must do this between multiple tasks.

Select File Position: This allows you to choose a position (in the Interface box) to load a performance file or stock file (if returning to stock) from your desktop or laptop PC.

Available VINs / Used VINs: This will allow you to keep track of your available VIN credits.

Status bar: This will show you the transfer status of “reading” or “writing” to your Interface box.

Between the Buttons and the Wester’s logo: Numbers 1-6 represents the locations (in the Interface box) that you can load a performance file or stock file. Once loaded, the file name will display on the line that corresponds.

